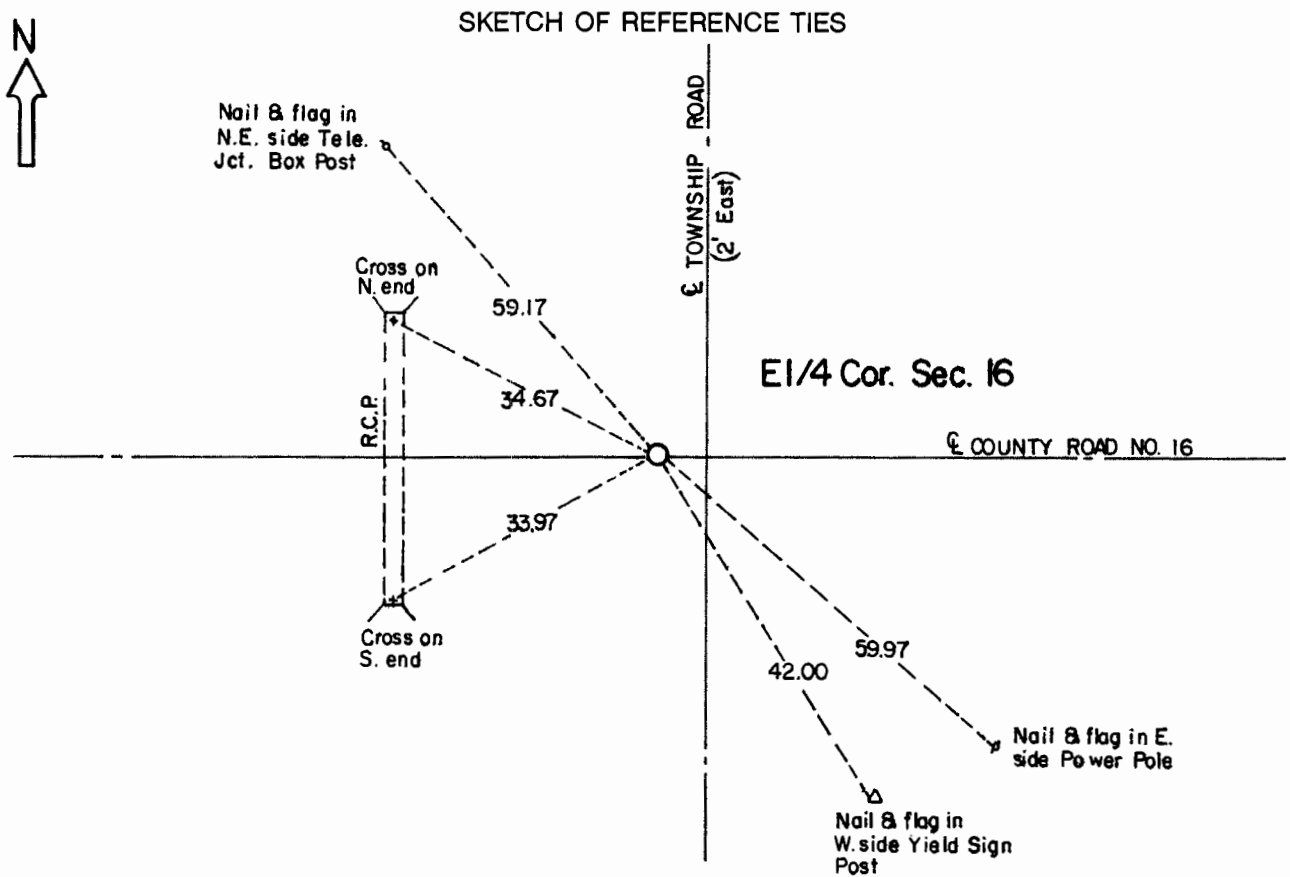


CERTIFICATE OF LOCATION OF GOVERNMENT CORNER

East Quarter Corner of Section **16** , Township **107** , Range **41** 5th P.M.
STATE OF MINNESOTA, County of Murray.

Statement: Oct. 31, 1989 - Found a wooden hub with a 12 inch x 9 inch x 18 inch pointed field stone beneath it. Placed a Minnesota Department of Transportation Cast Iron Monument near the pavement surface.



Statement of evidence relative to this corner location is on the back of page.

I hereby certify that this document and the data contained herein was prepared by me or under my direct supervision and that I am a duly Registered Land Surveyor under the laws of the State of Minnesota.

Duane A. Bonnema
Duane A. Bonnema

Nov 6, 1989
Date

Minnesota Registration No. 14895

OFFICE OF THE COUNTY RECORDER
COUNTY OF MURRAY

NOV 15 1989

I hereby certify that this document was filed in the County Recorder's office at ___M. on the ___ day of _____ A.D., 19__

County Recorder _____

By _____, Deputy

DOCUMENT NO. _____

East Quarter Cor. Sec. 16 T107N-R41W

Statement:

- August 1861* *Original Government Land Office Surveyor L. G. M. Fletcher records in his field notes, "Built mound with trench pits, charred stake, per instructions."*
- Date Unknown* *The Minnesota Highway Engineer's Office notes that they found a "hub". They further note that they should "dig" at this location.*
- Oct. 31, 1989* *Duane A. Bonnema, LS Reg. No. 14895, found a 12 inch long wooden hub 2 feet below the road surface. A 12 inch x 9 inch x 18 inch pointed stone was found, with an old wooden lath along side, at a depth of 3 feet below the road surface. Natural ground was found to be at a depth of 3 feet also. A Minnesota Department of Transportation cast iron monument was placed near the pavement surface.*